





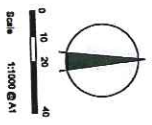
**LEGEND**

-  Multi Unit Sites - Future development
-  Commercial Sites - Future development
-  Paths (Shared, Pedestrian and Bicycle)
-  Existing Contours



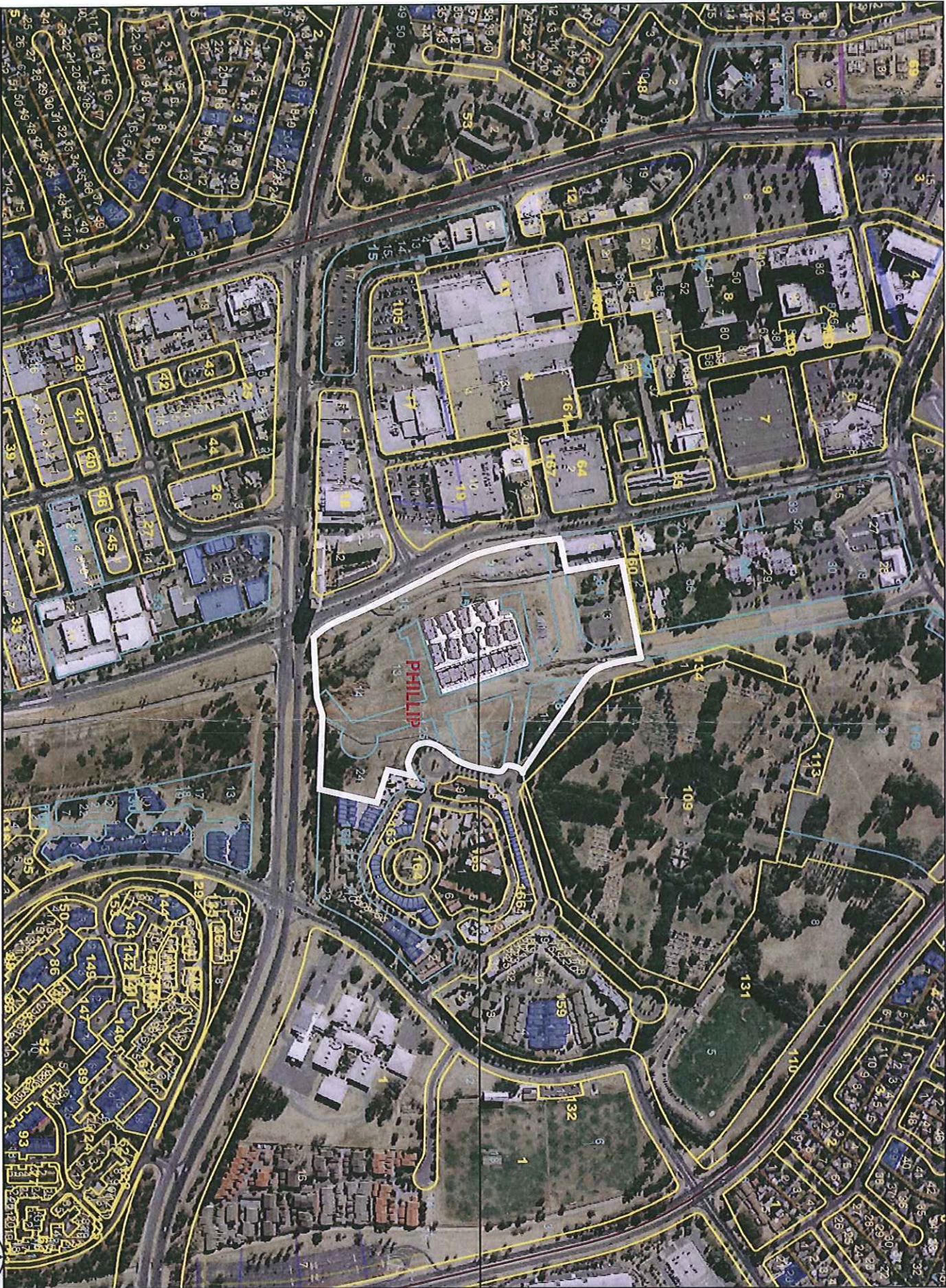
**AVOCA**  
AT WODEN GREEN

**WODEN GREEN ESTATE DEVELOPMENT PLAN**





**AVOCA**  
AT WODEN GREEN



**INDEPENDENT**  
PROPERTY GROUP

**Land Development Agency**  
CANBERRA FIRST

**HINDMARSH**  
Leadership at work.



## Purchaser Preference Form

This form is to be used to register your interest in purchasing a property at **Avoca at Woden Green (Block 12 Section 156 Phillip)**. An allocation of your preference, prior to the official release date, will be carried out in accordance with the instructions of the vendor.

Please note the following:

- All properties may not necessarily be available for sale.
- Complete one form only with order of preference for properties wished to be purchased.
- Please note - If a purchaser completes two or more forms and is allocated two or more properties, the purchaser must proceed to exchange contracts on all allocated properties, otherwise the vendor may (at their discretion) choose not to exchange on any properties with the purchaser.

Salespersons Name: \_\_\_\_\_

Full Name of Purchaser(s): \_\_\_\_\_

Previous Independent Client:

- Past Purchaser: Circle YES or NO. How many properties purchased? \_\_\_\_\_
- Past Vendor: Circle YES or NO. How many properties sold? \_\_\_\_\_
- and/or Property Management lessor client: Circle YES or NO. \_\_\_\_\_
- How many properties under management by Independent? \_\_\_\_\_

### Purchaser Details

Mailing Address: \_\_\_\_\_

\_\_\_\_\_

Contact Numbers: (h) \_\_\_\_\_ (w) \_\_\_\_\_ (m) \_\_\_\_\_

Email Address: \_\_\_\_\_

Solicitor's firm: \_\_\_\_\_

Solicitor's name: \_\_\_\_\_

Signed: \_\_\_\_\_ Date: \_\_\_\_\_

### Unit Preference

1.	6.
2.	7.
3.	8.
4.	9.
5.	10.



**Avoca Apartments - Woden**  
Block 12 Section 165

Unit No.	Level	Building	Plan Type	Living area m <sup>2</sup>	Beds	Baths	Balcony / terrace m <sup>2</sup>	Courtyard m <sup>2</sup>	Parking	Sales price	
											\$
1	Ground	Building A	Type 1A	58.1	1	1		51.3	1	\$	\$ 42,315,100
2	Ground	Building A	Type 1A	58.1	1	1		51.3	1	\$	\$ 342,900
3	Ground	Building A	Type 1A	58.1	1	1		51.3	1	\$	\$ 342,900
4	Ground	Building A	Type 1C+	76.5	1	1		106.9	1	\$	\$ 389,900
5	Ground	Building A	Type 1D+	76.5	1	1		111.8	1	\$	\$ 389,900
6	Ground	Building A	Type 1A	58.1	1	1		51.3	1	\$	\$ 339,900
7	Ground	Building A	Type 1A	58.1	1	1		51.3	1	\$	\$ 339,900
8	Ground	Building A	Type 1A	58.1	1	1		51.3	1	\$	\$ 339,900
9	Ground	Building A	Type 1A	58.1	1	1		51.3	1	\$	\$ 339,900
10	Ground	Building A	Type 1A	58.1	1	1		51.3	1	\$	\$ 339,900
11	Ground	Building A	Type 1A	58.1	1	1		51.3	1	\$	\$ 339,900
12	Ground	Building A	Type 2A	85.4	2	2		79	2	\$	\$ 432,900
13	Ground	Building A	Type 2A	85.4	2	2		79	2	\$	\$ 433,900
14	Ground	Building A	Type 1A	58.1	1	1		51.3	1	\$	\$ 342,900
15	Ground	Building A	Type 1A	58.1	1	1		51.3	1	\$	\$ 342,900
16	Ground	Building A	Type 1A+	77.8	1	1		71.6	1	\$	\$ 396,900
17	First	Building A	Type 1A	58.1	1	1	9.1		1	\$	\$ 335,900
18	First	Building A	Type 1A	58.1	1	1	9.1		1	\$	\$ 335,900
19	First	Building A	Type 1A	58.1	1	1	9.1		1	\$	\$ 335,900
20	First	Building A	Type 1C+	76.5	1	1	14.8		1	\$	\$ 382,900
21	First	Building A	Type 1C+	76.5	1	1	14.8		1	\$	\$ 381,900
22	First	Building A	Type 1A	58.1	1	1	9.1		1	\$	\$ 332,900
23	First	Building A	Type 1A	58.1	1	1	9.1		1	\$	\$ 332,900
24	First	Building A	Type 1A	58.1	1	1	9.1		1	\$	\$ 332,900
25	First	Building A	Type 1A	58.1	1	1	9.1		1	\$	\$ 332,900
26	First	Building A	Type 1A	58.1	1	1	9.1		1	\$	\$ 332,900
27	First	Building A	Type 1A	58.1	1	1	9.1		1	\$	\$ 332,900
28	First	Building A	Type 2B	85.4	2	2	15.1		1	\$	\$ 421,900
29	First	Building A	Type 2B	85.4	2	2	15.1		1	\$	\$ 422,900
30	First	Building A	Type 1A	58.1	1	1	9.1		1	\$	\$ 335,900
31	First	Building A	Type 1A	58.1	1	1	9.1		1	\$	\$ 335,900
32	First	Building A	Type 1A+	77.8	1	1	8		1	\$	\$ 389,900

**Avoca Apartments - Woden**  
Block 12 Section 165

Unit No.	Level	Building	Plan Type	Living area m <sup>2</sup>		Beds	Baths	Balcony / terrace m <sup>2</sup>	Courtyard m <sup>2</sup>	Parking	Sales price	
				11786.2							\$	\$
33	Second	Building A	Type 1A	58.1		1	1	9.1		1	\$	339,900
34	Second	Building A	Type 1A	58.1		1	1	9.1		1	\$	337,900
35	Second	Building A	Type 1A	58.1		1	1	9.1		1	\$	337,900
36	Second	Building A	Type 1C+	76.5		1	1	14.8		1	\$	386,900
37	Second	Building A	Type 1C+	76.5		1	1	14.8		1	\$	385,900
38	Second	Building A	Type 1A	58.1		1	1	9.1		1	\$	335,900
39	Second	Building A	Type 1A	58.1		1	1	9.1		1	\$	335,900
40	Second	Building A	Type 1A	58.1		1	1	9.1		1	\$	337,900
41	Second	Building A	Type 1A	58.1		1	1	9.1		1	\$	337,900
42	Second	Building A	Type 1A	58.1		1	1	9.1		1	\$	335,900
43	Second	Building A	Type 1A	58.1		1	1	9.1		1	\$	335,900
44	Second	Building A	Type 2B	85.4		2	2	15.1		2	\$	433,900
45	Second	Building A	Type 2B	85.4		2	2	15.1		2	\$	434,900
46	Second	Building A	Type 1A	58.1		1	1	9.1		1	\$	337,900
47	Second	Building A	Type 1A	58.1		1	1	9.1		1	\$	337,900
48	Second	Building A	Type 1A+	77.8		1	1	8		1	\$	392,900
49	Ground	Building B	Type 1B	56		1	1		32	1	\$	331,900
50	Ground	Building B	Type 1B	56		1	1		32	1	\$	331,900
51	Ground	Building B	Type 1B	56		1	1		32	1	\$	332,900
52	First	Building B	Type 2G	88.7		2	2	14		2	\$	441,900
53	First	Building B	Type 1B	56		1	1	8.4		1	\$	323,900
54	First	Building B	Type 1B	56		1	1	8.4		1	\$	323,900
55	First	Building B	Type 1B+	77		1	1	8.4		1	\$	379,900
56	Second	Building B	Type 2G	88.7		2	2	14		2	\$	443,900
57	Second	Building B	Type 1B	56		1	1	8.4		1	\$	328,900
58	Second	Building B	Type 1B	56		1	1	8.4		1	\$	328,900
59	Second	Building B	Type 1B+	77		1	1	8.4		1	\$	384,900
60	Ground	Building C	Type 1B	56		1	1		32	1	\$	329,900
61	Ground	Building C	Type 1B	56		1	1		32	1	\$	328,900
62	Ground	Building C	Type 1B	56		1	1		32	1	\$	328,900
63	Ground	Building C	Type 1B+	77		1	1		32	1	\$	385,900
64	First	Building C	Type 1B+	77		1	1	8.4		1	\$	378,900

**Avoca Apartments - Woden**  
Block 12 Section 165

Unit No.	Level	Building	Plan Type	Living area m <sup>2</sup>	Beds	Baths	Balcony / terrace m <sup>2</sup>	Courtyard m <sup>2</sup>	Parking	Sales price	
										11786.2	\$
65	First	Building C	Type 1B	56	1	1	8.4		1	\$	319,900
66	First	Building C	Type 1B	56	1	1	8.4		1	\$	319,900
67	First	Building C	Type 1B+	77	1	1	8.4		1	\$	378,900
68	Second	Building C	Type 1B+	77	1	1	8.4		1	\$	381,900
69	Second	Building C	Type 1B	56	1	1	8.4		1	\$	326,900
70	Second	Building C	Type 1B	56	1	1	8.4		1	\$	326,900
71	Second	Building C	Type 1B+	77	1	1	8.4		1	\$	381,900
72	Ground	Building D	Type 1B	56	1	1		32	1	\$	332,900
73	Ground	Building D	Type 1B	56	1	1		32	1	\$	331,900
74	Ground	Building D	Type 1B	56	1	1		32	1	\$	331,900
75	Ground	Building D	Type 1B	56	1	1		32	1	\$	332,900
76	First	Building D	Type 1B+	77	1	1	8.4		1	\$	379,900
77	First	Building D	Type 1B	56	1	1	8.4		1	\$	323,900
78	First	Building D	Type 1B	56	1	1	8.4		1	\$	323,900
79	First	Building D	Type 1B+	77	1	1	8.4		1	\$	379,900
80	Second	Building D	Type 1B+	77	1	1	8.4		1	\$	384,900
81	Second	Building D	Type 1B	56	1	1	8.4		1	\$	328,900
82	Second	Building D	Type 1B	56	1	1	8.4		1	\$	328,900
83	Second	Building D	Type 1B+	77	1	1	8.4		1	\$	374,900
84	Ground	Building E	Type 1B	56	1	1		32	1	\$	329,900
85	Ground	Building E	Type 1B	56	1	1		32	1	\$	328,900
86	Ground	Building E	Type 1B	56	1	1		32	1	\$	328,900
87	Ground	Building E	Type 1B+	77	1	1		32	1	\$	385,900
88	First	Building E	Type 1B+	77	1	1	8.4		1	\$	378,900
89	First	Building E	Type 1B	56	1	1	8.4		1	\$	319,900
90	First	Building E	Type 1B	56	1	1	8.4		1	\$	319,900
91	First	Building E	Type 1B+	77	1	1	8.4		1	\$	378,900
92	Second	Building E	Type 1B+	77	1	1	8.4		1	\$	381,900
93	Second	Building E	Type 1B	56	1	1	8.4		1	\$	325,900
94	Second	Building E	Type 1B	56	1	1	8.4		1	\$	325,900
95	Second	Building E	Type 1B+	77	1	1	8.4		1	\$	381,900
96	Ground	Building F	Type 1B	56	1	1		32	1	\$	332,900

# Avoca Apartments - Woden

Block 12 Section 165

Unit No.	Level	Building	Plan Type	Living area m <sup>2</sup>		Beds	Baths	Balcony / terrace m <sup>2</sup>	Courtyard m <sup>2</sup>	Parking	Sales price	
				11786.2							\$	
97	Ground	Building F	Type 1B	56		1	1		32	1	\$	338,900
98	Ground	Building F	Type 1B	56		1	1		32	1	\$	338,900
99	Ground	Building F	Type 1B	56		1	1		32	1	\$	338,900
100	First	Building F	Type 1B+	77		1	1	8.4		1	\$	379,900
101	First	Building F	Type 1B	56		1	1	8.4		1	\$	329,900
102	First	Building F	Type 1B	56		1	1	8.4		1	\$	329,900
103	First	Building F	Type 1B+	77		1	1	8.4		1	\$	386,900
104	Second	Building F	Type 1B+	77		1	1	8.4		1	\$	384,900
105	Second	Building F	Type 1B	56		1	1	8.4		1	\$	335,900
106	Second	Building F	Type 1B	56		1	1	8.4		1	\$	335,900
107	Second	Building F	Type 1B+	77		1	1	8.4		1	\$	389,900
108	Ground	Building G	Type 1B	56		1	1		32	1	\$	336,900
109	Ground	Building G	Type 1B	56		1	1		32	1	\$	336,900
110	Ground	Building G	Type 1B	56		1	1		32	1	\$	336,900
111	Ground	Building G	Type 2E	87		2	2		48	1	\$	429,900
112	First	Building G	Type 1B+	77		1	1	8.4		1	\$	384,900
113	First	Building G	Type 1B	56		1	1	8.4		1	\$	328,900
114	First	Building G	Type 1B	56		1	1	8.4		1	\$	328,900
115	First	Building G	Type 2E	87		2	2	14.5		1	\$	423,900
116	Second	Building G	Type 1B+	77		1	1	8.4		1	\$	387,900
117	Second	Building G	Type 1B	56		1	1	8.4		1	\$	333,900
118	Second	Building G	Type 1B	56		1	1	8.4		1	\$	333,900
119	Second	Buildina G	Type 2E	87		2	2	14.5		1	\$	426,900